

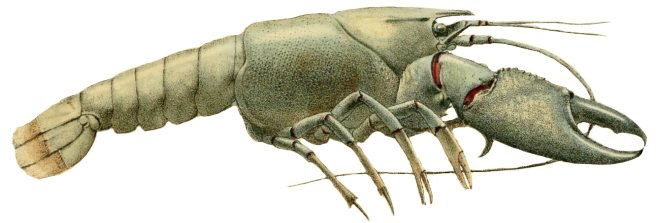
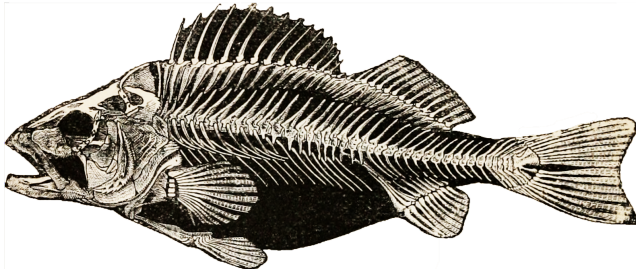
INVERTEBRATE AND VERTEBRATE CHALLENGE:



Invertebrates are animals that do not have an internal skeleton or backbone, while **Vertebrates** are ones that do. There are benefits to each type of anatomy.

Take a few minutes to think about how the skeletons of each animal impact:

- How it moves.
- Where the animal lives.
- How they grow.
- How it protects or does not protect the animal.
- What type of animals prey upon it, and it may eat.



In the boxes below, Compare and Contrast the fish skeleton with the crayfish exoskeleton.

Fish Skeleton	Both	Crayfish Exoskeleton