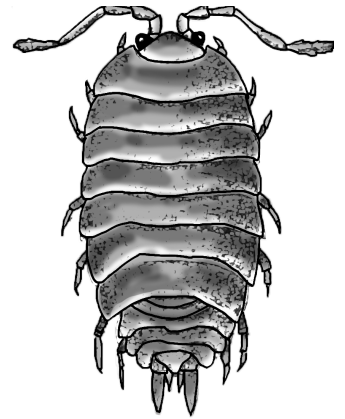




EXPLORE YOUR BACKYARD, FIND A CRUSTACEAN! - CHALLENGE:

Head outside and find your own **crustacean** to analyze in the form of an **isopod**! Observe the animal in its natural habitat and describe behavioral, physical, and environmental traits you notice.

Look for isopods in dark, damp areas like under rocks and logs outside. Try to **OBSERVE** the organism for at least 5 minutes. While you do so, **DRAW and LABEL the Isopod, what you think it's doing and its habitat.**



Draw the isopod you found in the box below!

BEHAVIORAL: What is the isopod doing? What occurred when you lifted up the rock/log? What happens if you hold the isopod? (Do this carefully so as not to injure the organism)

PHYSICAL: Time to think about the adaptations of the isopod. Do you see the isopod's exoskeleton? Is it hard or soft? Why do you think this is a useful adaptation? What other physical characteristics do you notice?

ENVIRONMENTAL: What does the isopod's habitat look like? Where did you find it? Was it a warm or cold environment? Wet or dry? Sunny or shady?