

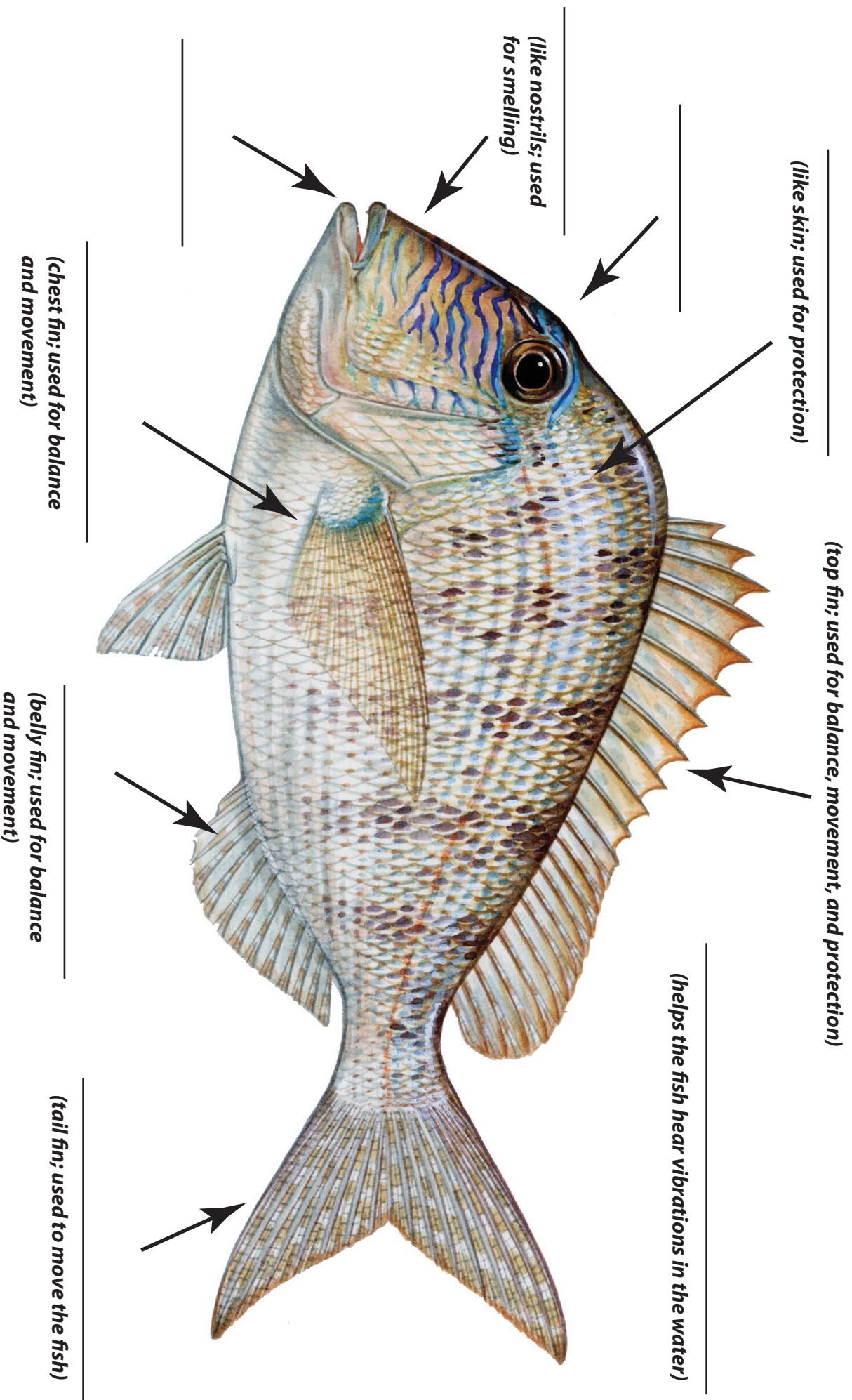
# Internal/External Anatomy of a Fish

Name: \_\_\_\_\_

1. List three body systems that both humans and fish have.
2. Draw a line and match each fish organ/body part to its appropriate function.

<i>Gills</i>	Protects fish from parasites and bacteria in the water
<i>Lateral Line</i>	Filters toxins from a fish's blood stream and creates waste
<i>Slime Layer</i>	Filled with gases; helps the fish move up and down in the water column.
<i>Swim Bladder</i>	Helps with digestion processes
<i>Kidneys</i>	Allows the fish to hear and feel vibrations in the water
<i>Pyloric Cacaes</i>	Secretes bile to aid in digestion
<i>Liver</i>	Allows fish to breath underwater

Label the external anatomy features of the fish found in the Porgy family below.



**Word Box:**

Dorsal Fin

Nares

Lateral Line

Caudal Fin

Pectoral Fin

Scales

Ventral Fin

Mouth

Eye