



BROOK TROUT CHALLENGE: LAKE DATA

Use the **Lake Data** on the following pictures along with the **TABLE** on the **BROOK TROUT CHALLENGE SHEET** to determine where you might be able to find brook trout.

Remember to include your **Evidence** for why you think a Pond or Lake would be a good place to find them.

Boottree Pond

Temperature

19° C

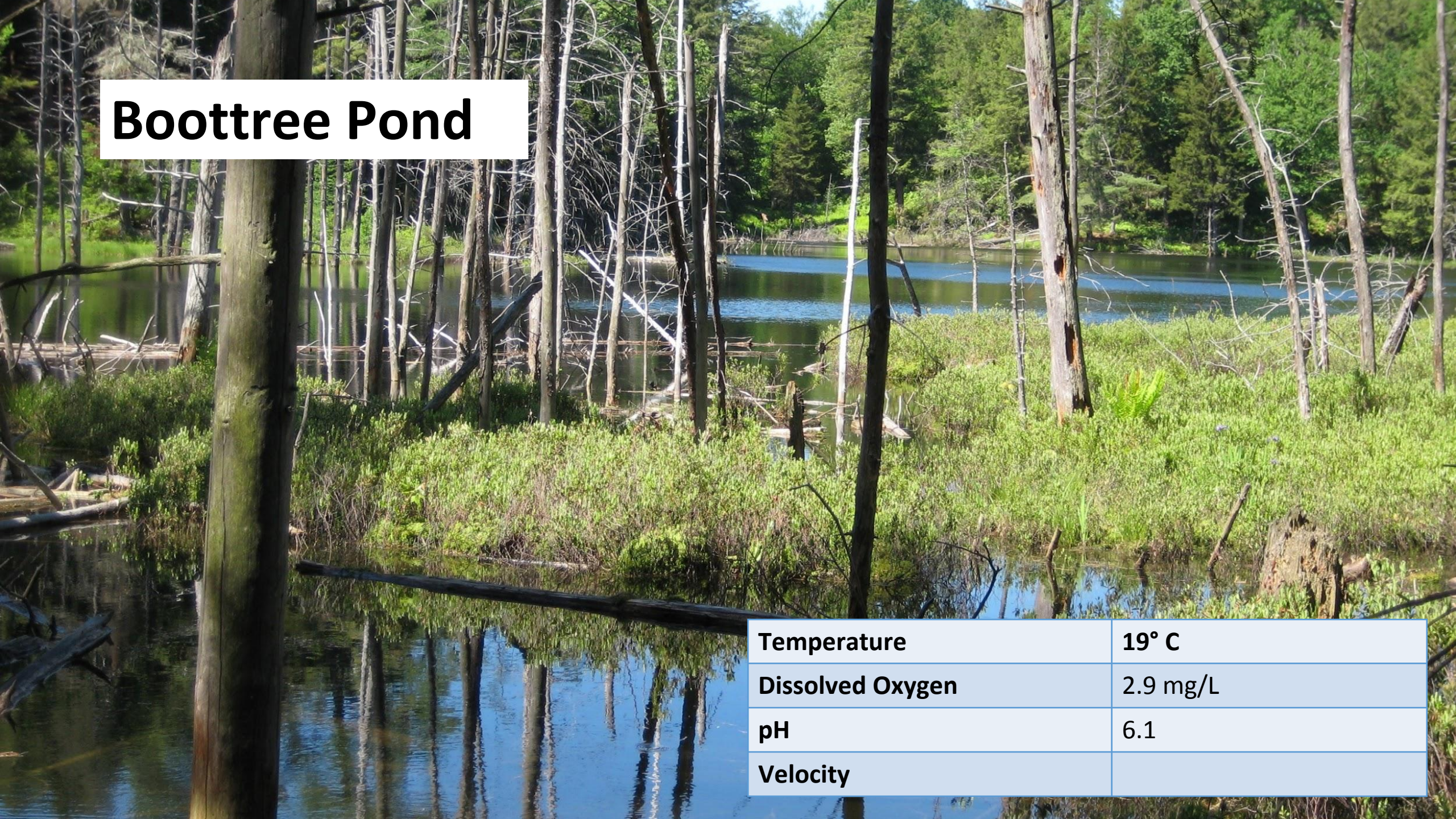
Dissolved Oxygen

2.9 mg/L

pH

6.1

Velocity



Tooley Pond

A wide-angle photograph of Tooley Pond. The water is dark blue with small ripples and reflects the sky. In the background, a dense line of green trees stretches across the horizon. The sky is bright blue with scattered white clouds. The title 'Tooley Pond' is overlaid in the top left corner in a large, bold, black font.

Temperature

25.9° C

Dissolved Oxygen

8.1 mg/L

pH

6.66

Velocity

Upper Cascade Lake



Temperature

17.5° C

Dissolved Oxygen

8.17 mg/L

pH

7.33

Velocity

Wolf Pond



Temperature

20.87° C

Dissolved Oxygen

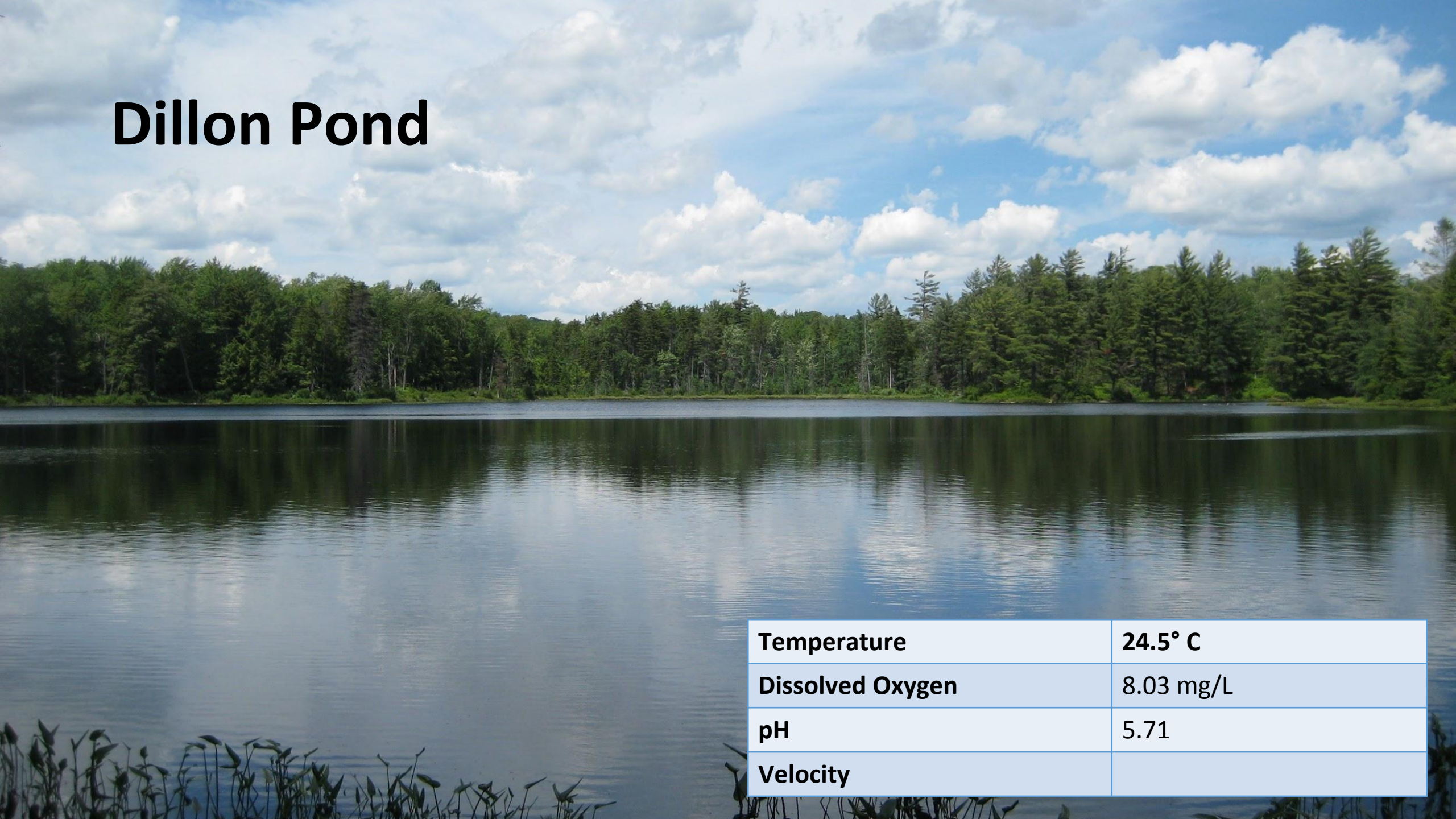
9.7 mg/L

pH

7.8

Velocity

Dillon Pond



Temperature	24.5° C
Dissolved Oxygen	8.03 mg/L
pH	5.71
Velocity	

Chapel Pond

Temperature	19.7° C
Dissolved Oxygen	8 mg/L
pH	7.11
Velocity	

Horseshoe Pond

Temperature	22.63° C
Dissolved Oxygen	3.73 mg/L
pH	6.37
Velocity	